



WORLD AESTHETIX



X-ONE 3T Intelligent Body Assessment Instrument

Product Instruction

Thank you for purchasing the X-ONE PRO!

In order to obtain the optimal measurement results and safety, please carefully read this instruction.

Please keep the manual properly after reading for consulting and reference at any time.

* The illustrations in this instruction are schematic diagrams.

Precautions about product usage.....	2
Safety information.....	3
Product information.....	4
Product installation.....	5
Product activation.....	7
Basic functions.....	9
Service policy.....	12
Warranty.....	12

Precautions about product usage

Please abide by the precautions in instruction and other correct application method. Otherwise, World Aesthetix will not undertake any responsibilities.

Contraindications

- People who are implanted with heart pacemakers or other medical devices in body can't use the body composition measurement function of this product because this product would send weak current through human body in the measurement process of body composition, and then the weak current may cause the medical device implanted in the human body (such as cardiac pacemaker) may run out of order, triggering serious consequences.

Storage and use conditions

- Storage conditions: Temperature: -20 °C ~ 45 °C, humidity: 20% RH ~ 75% RH, atmospheric pressure: 700 hPa ~ 1060 hPa.
- Service conditions: Temperature: 10 °C ~ 40 °C, humidity: 20% RH ~ 75% RH, atmospheric pressure: 700 hPa ~ 1060 hPa.
- Please do not expose to the sun or store this product in the area with great temperature change.
- Please do not store this product in relatively wet area with great dust or near combustion source.
- Please do not store this product in the area with larger vibration.

Precautions in use:

- It is forbidden to insert and unplug the power line with wet hand to avoid electric shock, electric leakage or fire. Please do not insert or unplug the power plug of the product by pulling the cable with force or dismantle or refit the product without permission to avoid electric shock or other human injury accidents and the influence on the device accuracy.
- Please do not pour any liquid on product because liquid permeation would cause the internal damage of product.
- Please do not place any articles on foot pedal to avoid the product fault due to long-term load bearing.
- Please do not use other large-power product when using this product to avoid influencing this product.
- Please do not move this product upon power-on.
- People shall be barefoot upon measurement of body composition by this product. Before and after each use, people shall dip moderate medicinal alcohol with soft cloth to clean the electrode on feet and hands in order to prevent propagating contagious diseases. Please do not wipe the product with strong chemical reagents.
- Please use the original power adapter to ensure the normal work of product.
- People who have difficulty in moving, the old and children shall use this product with the help and guidance of specially-assigned persons to avoid injury or misoperation.
- Please turn off the power if the product is no used for more than one day. Please unplug the power supply and store product if it is not used for a long time.

Maintenance precautions

- This product is precise instrument, please do not arbitrarily dismantle. For any fault caused due to arbitrary disassembly of products, World Aesthetix will not provide free warranty service.

Special announcement

- This product is applicable to measuring the data of body composition, body type, posture, etc. The measurement data and suggestions are only used for reference, and can't be used as the basis for diagnosis and medical care.

Limitation of Liability

- The information in this document is provided “as is” and based on the latest available data. Except as required by applicable law, World Aesthetix makes no explicit or implied guarantees regarding the accuracy, merchantability, or fitness of this information or product for a particular purpose.
- To the fullest extent allowed by law, World Aesthetix is not liable for any special, incidental, indirect, or consequential damages, including but not limited to lost profits, business disruption, or data loss resulting from the use or misuse of this product.
- Any liability under applicable laws is limited to the maximum extent permitted and in no case exceeds the amount paid for the product.

Software Restriction

- This product may contain software that is the property of World Aesthetix or third-party licensors. Unless legally permitted, users may not modify, copy, distribute, reverse-engineer, or sublicense this software.
- The availability and performance of certain features may vary depending on local network support or configuration.
- World Aesthetix reserves the right to change software or firmware functionality at any time without prior notice.

Value-Added Services

- When using value-added services provided with this product, World Aesthetix may charge additional service fees as applicable.
- All service fees and terms are subject to change and will be publicly posted or shared with you under a separate agreement.
- World Aesthetix may adjust or modify services based on your location, usage, or product version.

Data Security

- Unauthorized third-party firmware or software may compromise data privacy and device function.
- Use only approved software to protect your personal information. World Aesthetix recommends using built-in security features when available.

Import and Export Control

- To understand how we collect, store, and use your personal information, please visit <https://worldaesthetix.com/privacy-policy>

Environmental Protection

- Do not dispose of this product or accessories as unsorted domestic waste.
- Follow local laws regarding e-waste recycling.
- Ensure proper handling and disposal to protect the environment and comply with regulations.

Electrical Safety Requirements

- This product complies with GB 9706.1-2020.

Electromagnetic Compatibility

- This product complies with YY 0505-2012 standards.

Environmental Testing

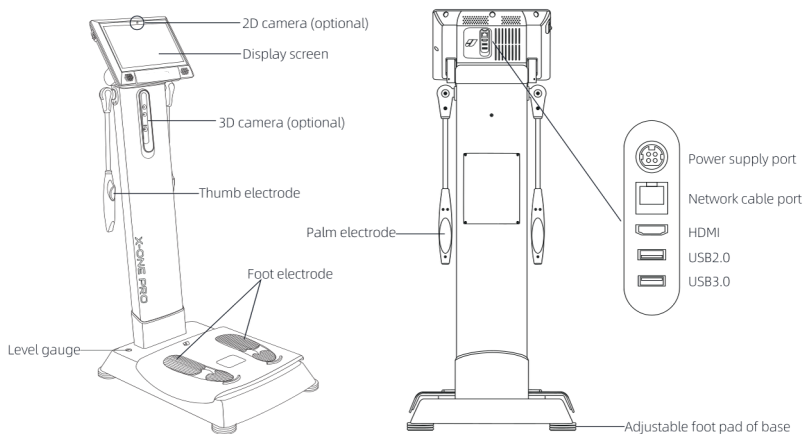
- This product meets conditions set in GB/T 14710-2009 for transport and environmental durability.

Electromagnetic Emission Standards

- Compliant with GB/T 16886.

Product information

Product subject



Packing List



Product *1



Operating instruction *1



Power line*1



Power adapter*1



Assembly screw *2



Assembly tool *1

Application scope

This product is applicable to measuring the data of body composition, body type, posture, etc. The measurement data and suggestions are only used for reference, and can't be used as the basis for diagnosis and medical care.

Product performance

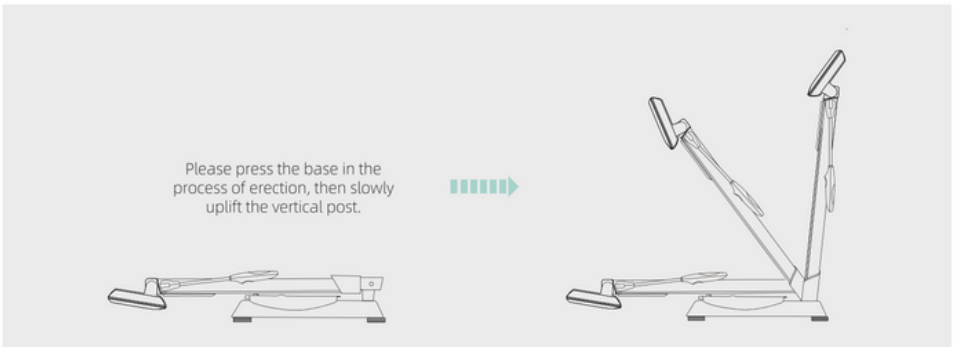
Input power	AC 100~240V, 50~60Hz, 1A~0.5A
Operational system	Android System
WIFI module	2.4GHz and 5GHz
Bluetooth module	4.0 Bluetooth
Display screen	11.6 inches touch screen
Range of applicable age	03 ~ 99 years old
Range of applicable height	90cm ~ 240cm
Range of measuring weight	10kg ~ 260kg

Product installation

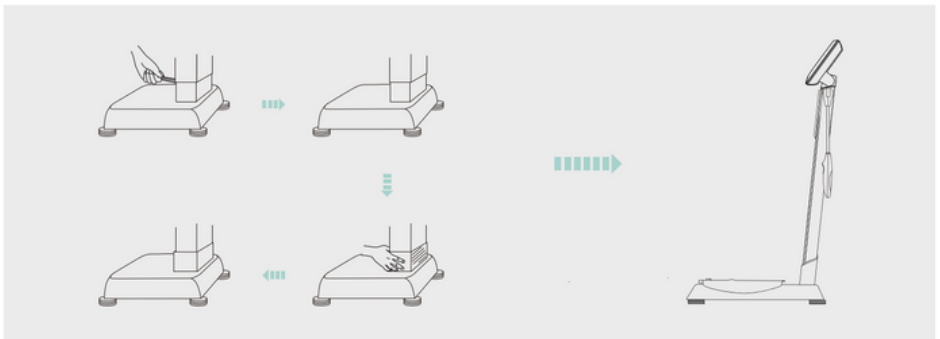
1. Open the packing container to inspect whether the components in the product packaging are intact and whether gaps and omissions arise.



2. Take out the product from the packing container and put it onto the flat ground and then make the vertical post of product upright.

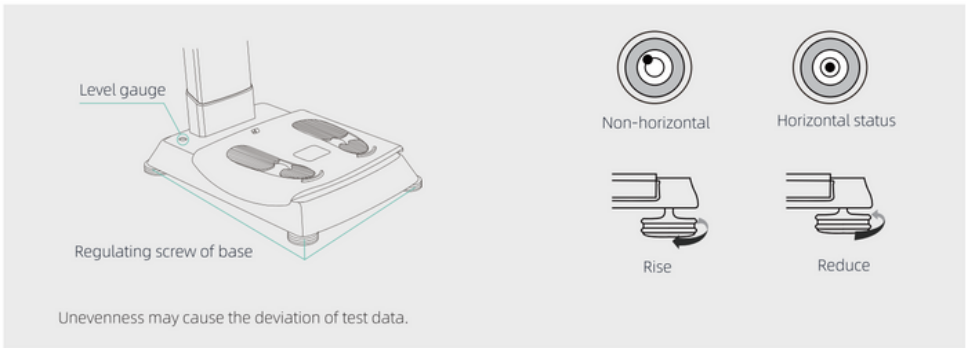


3. Tighten the "hexagonal screw" internally with hexagon wrench to fix the vertical post of product and then cover the protection cover.

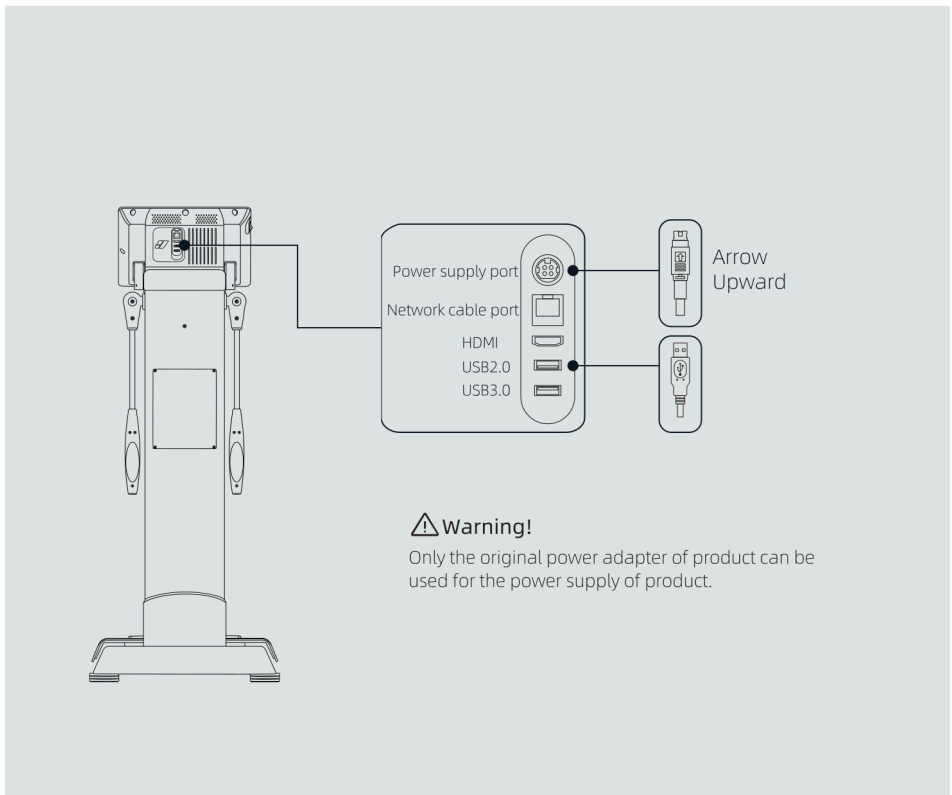


Product installation

4. Adjust the base to reach the horizontal status.



5. Insert the power adapter into the power outlet as shown in the figure.



Product activation

1. Switch on the power supply button of product to start product, and wait for completing load.

Power button of product



Startup



Startup loading

2. Enter the network setup page after completing loading, and select the wired or wireless method for connection of internet.



Wireless mode



Insert the network cable into the network cable port on the back of the machine.

Wireless mode

3. Click "activate" after successful internet connection; Choose your country and region



Click "activate"



Country/Region

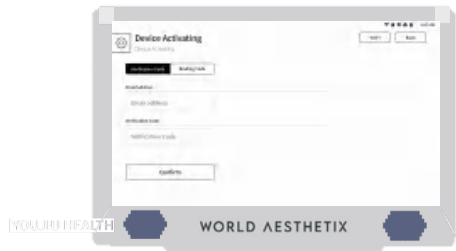
Product activation

4. Check the merchants' privacy policy and service agreement, tick "consent" after confirmation without error and then click [next step]



User Agreement and Service Policy

5.Fill out the product activation information, input mobile phone number and send verification code. Click [ok] button after filling.



Activation interface

6. Start using after successful activation of product.



Successful activation



Homepage

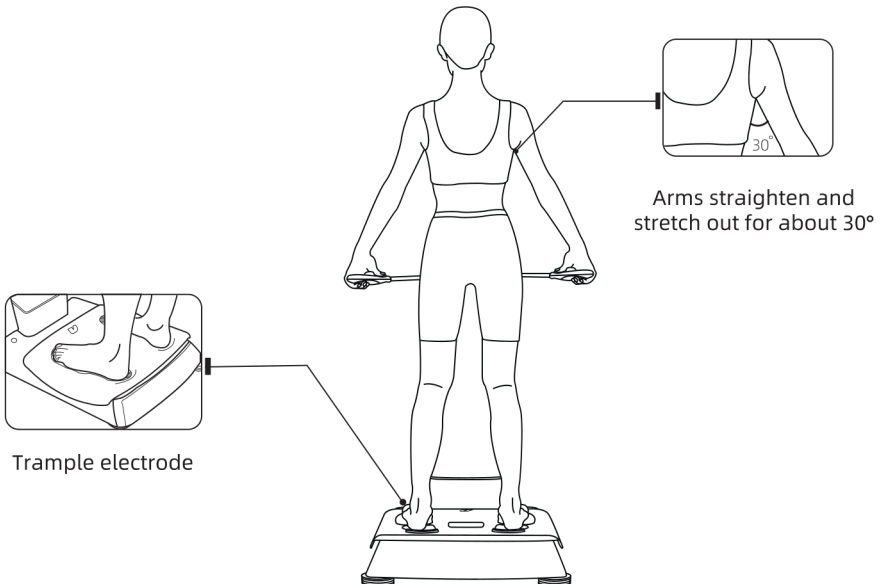
Body Composition Analysis

Precautions for body composition analysis

- Dry hands and feet may influence body composition, and can be moistened with clean water when needed.
- Do not take a shower or take a bath before the test, because lots of sweat may cause inaccurate measurement results.
- Please do not take food within two hours before the test, otherwise, the measurement results may not be accurate.
- Please do not take exercise or conduct strenuous exercise before the test, otherwise the measurement results may be inaccurate.
- In the measurement process, mutual contact between arms and body as well as between inner sides of both legs is forbidden. In case of any contact, it is necessary to use dry towel or similar item for separation.
- Please measure at normal temperature, because the excessive high or low ambient temperature may cause inaccurate measurement results.
- The test results in the same time range (forenoon) every day can reflect the change trend of body composition relatively accurately.
- Before the test, please empty bladder for measurement.
- Body composition analysis result of the woman during female physiological period or the pregnant woman may be inaccurate.

Test instruction

- Hand gesture: Please stick the thumb electrode with thumb, hold palm electrode with four fingers, and keep holding gesture in the test process.
- Feet gesture: Please stand on electrode with bare feet, pay attention to aligning the heel at the electrode edge of feet, and keep close contact between feet and electrode in the test process.
- Please keep both arms straighten and stretch out for about 30° in the test process.



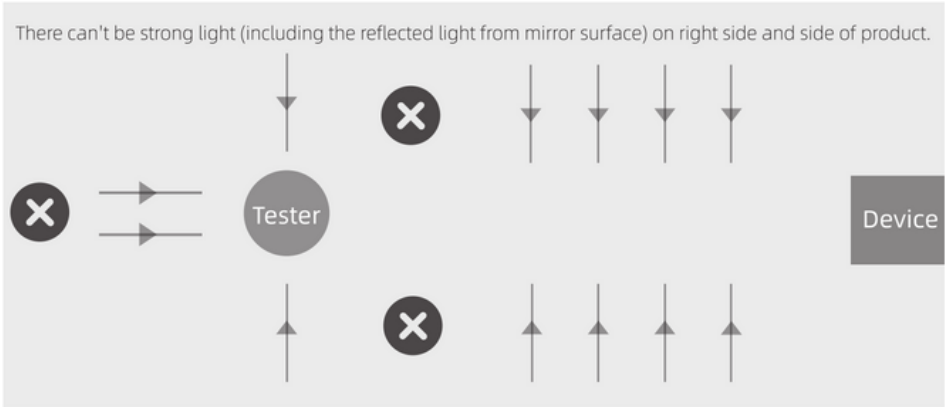
Basic functions

Postural Assessment / Body Shape Assessment / Functional Assessment✕

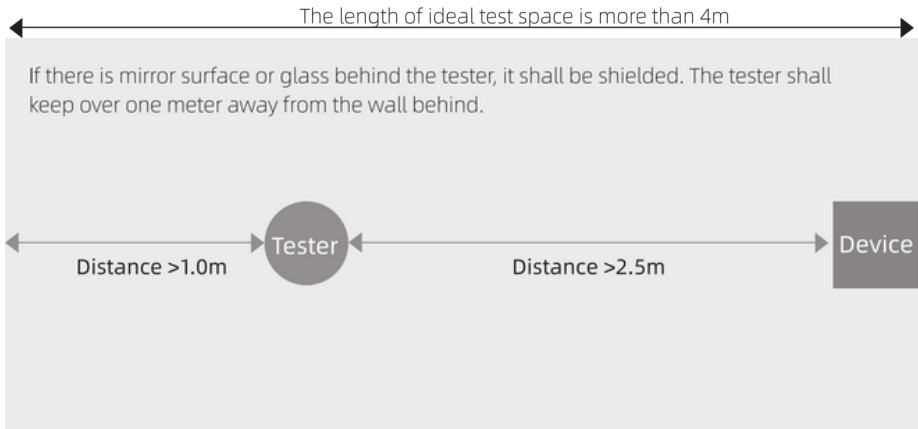
Test environment suggestions

- The test space is above 4m x 2m, which is optimal. (Length: 4m, width: 2m)
- It is suggested not to test in strong light, including the light reflection from mirror.
- The tester is suggested to keep above 1 meter away from the wall behind.
- Please note that no interfering substance can occur in the test scope (including persons or other articles to avoid influencing the assessment results)
- It is suggested that the ground in the collection scope of camera is smooth.

Light requirements



Space requirements



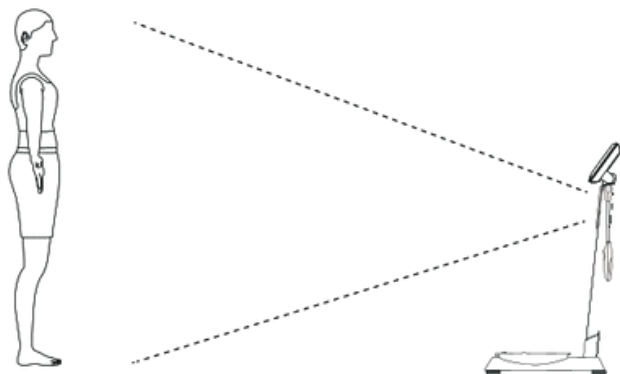
Notes: It supports the model of ✕ part

Dressing suggestions of tester

- It is suggested to wear close-fitting sportswear upon test.
- Please do not wear reflective clothing upon test.
- Please do not wear the jacket with choker and cap.
- Since long hair would influence the measurement, please coil up hair, and the bathing cap can be worn when necessary.

Postural Assessment guidance

- Please stand in camera shooting area after starting Postural Assessment. Keep both arms naturally droop and slightly stretch out upon test. Both feet stand naturally.
- The line connection of body skeleton point occurs in the camera shooting area, which represents the normal testing.
- The right side, side and reverse side shall be tested for posture assessment. Please test the right side at first as per the voice prompt.
- The product automatically jumps to the report result page at the end of test.



Body Shape Assessment guidance ✕

- Please stand in camera shooting area after starting Body Shape Assessment. Please keep both arms stretch out for about 45° upon the test, and both feet stand naturally.
- The line connection of body skeleton point occurs in the camera shooting area, which represents the normal testing.
- Test the right side at first as per the voice prompt. Keep the posture and turn right for 90° after the qualified test, and then test the left side, reverse side and right side successively.
- After four sides are completely tested, automatically calculate data and then jump to the report result page.

Functional Assessment guidance ✕

- After starting the balance assessment, please stand at the prompt position in the camera shooting area. After system has successful judgment, the product would officially enter the testing stage.
- At the balance assessment test stage, please raise both arms, lift up right leg, and keep the right leg parallel to the ground.
- After completing action, please close your eyes, and wait for voice prompt to start the test.
- The maximum testing period lasts for 25 seconds. Automatically calculate data after the test and jump to the report result page.

Notes: It supports the model of ✕ part

World Aesthetix

3740 St. John's Bluff Road South, Jacksonville FL 32224, United States

904-206-7029

sales@worldaesthetix.com

The data is only for reference, and doesn't constitute the promise in any form. The product (including but not limited to color, size, screen display, etc.) shall be subject to physical object.

In case of inconsistency with the descriptions on the official website, the descriptions on official website shall prevail without further notice, please pardon.